

LYNX[®] NGT-9000



The Lynx[®] NGT-9000 is a touchscreen Mode S ES transponder packed full of ADS-B benefits. All Lynx NGT-9000 models come with the ability to display ADS-B data onto compatible Multi Function Displays (MFDs) and Primary Flight Displays (PFDs) as well as Wi-Fi data to iPad and Android apps. The NGT-9000 is the ideal ADS-B compliant transponder that takes full advantage of the worldwide NextGen flight environment.



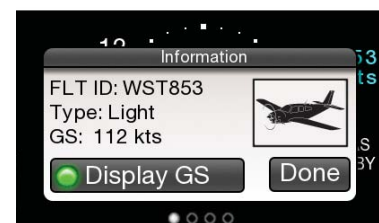
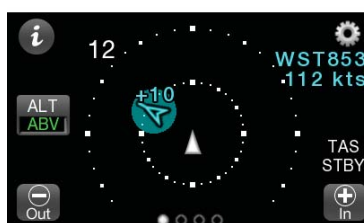
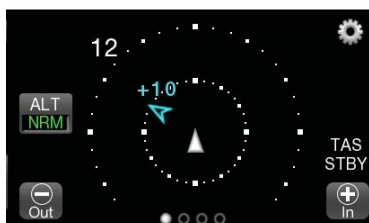
Shown Actual Size of 6.25" w x 1.8" h

Transponder with UAT 978 and 1090 Dual-Band ADS-B Receiver/Transmitter

The Lynx NGT-9000 series provides 1090ES (Mode S Extended Squitter) ADS-B Out/In resulting in a transponder that can be operated anywhere in the world. The 1090 MHz NGT-9000 has been engineered for use outside the United States, however the unit still retains the flexibility to be configured to receive on the 978 MHz band for those aircraft that may travel or export to the United States. The 978 MHz offers the ability to view subscription-free datalink weather on the NGT-9000 display and can easily be enabled by a dealer. All Lynx NGT-9000 models provide FAA, EASA and CASA mandated compliance and incorporate a rule-compliant position source (GPS/WAAS) requiring no external GPS connections.

ADS-B Traffic

One of the primary benefits of the ADS-B environment is the traffic information it provides. The Lynx NGT-9000 offers the flexibility to display traffic on the unit itself, as well as other panel-mounted avionics that use common data transfer protocols. The NGT-9000 features an in-line Wi-Fi transmitter, enabling pilots to view ADS-B traffic on their PED (iPad) using a compatible app. Another optional feature of the Lynx system is the ADS-B Traffic Advisory (ATAS) aural alerting which announces the range, bearing and relative altitude of intruder aircraft through cockpit's audio system. Pilots will hear warnings such as "Traffic, Traffic, 3 O' Clock High, 2 Miles."



Unique to the L3 system is its patented "Lynx Tail," providing detailed information of surrounding traffic, including flight ID, ground speed (GS) and aircraft classification (with corresponding icon) of participating ADS-B traffic.



NextGen Active Traffic Enablement

While ADS-B traffic is comprehensive, there are limitations to the service including GPS signal integrity and non-participating aircraft. The Lynx NGT-9000 has the ability to be equipped with the L3 NextGen Active Traffic enablement. This blends ADS-B traffic with active traffic data, providing an uninterrupted display of aircraft equipped with Mode A, C and S transponders. Adding L3 NextGen Active Traffic also enables extended aural alerting of intruder aircraft position, such as “Traffic, one o’clock high, two miles.” Existing SkyWatch® owners can reuse the system’s antenna and cables. The L3 NextGen Active Traffic enablement is built into the NGT-9000+, eliminating the need for an external box and reducing weight and installation costs.



An ADS-B target (triangle) along with two active traffic symbols (circle and diamond) from the L3 NextGen Active Traffic enablement are shown. The transponder screen has been minimized to view traffic and the moving map simultaneously.

Moving Map

Swiping the Lynx NGT-9000 touchscreen to the left, reveals a moving map on the right side of the display. This map is a useful visual reference highlighting airports and geopolitical boundaries in relationship to ownship position. The map data is derived from the embedded GPS/WAAS that is standard on all NGT-9000 models and helps raise overall situational awareness.



LYNX NGT-9000 Features

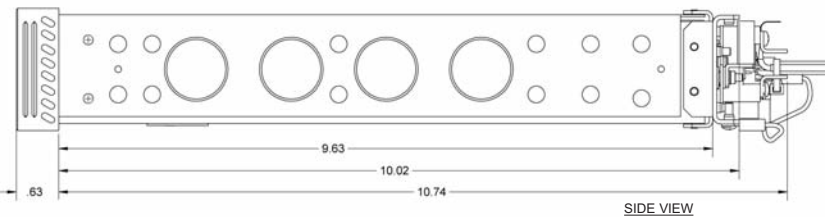
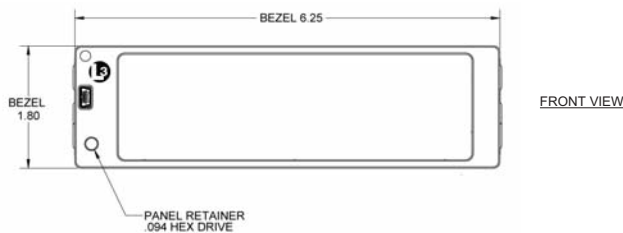
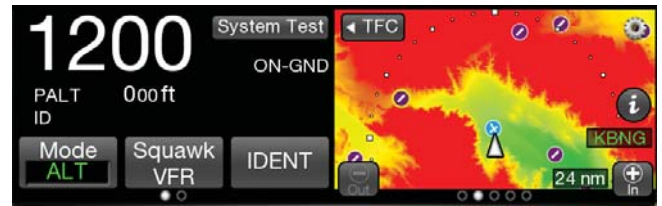
- Mode S ES transponder with intuitive touchscreen interface
- Designed for 14 V and 28 V installations
- Patented Lynx Tail provides flight ID, aircraft type and ground speed data of other ADS-B traffic
- Internal GPS/WAAS
- Moving map featuring airports and geographic boundaries
- Options available for active traffic, ATAS aural traffic warnings, antenna diversity, Wi-Fi connectivity and eTAWS

View traffic on compatible flight displays and iPad and Android Apps



Class B eTAWs Terrain Feature

The Lynx NGT-9000 models have the ability to be enabled with L3's Class B embedded Terrain Alerting & Warning (eTAWs) feature. The Lynx eTAWs option adds terrain alerting through both graphic and aural warnings. The color-coded terrain screen provides a surveillance range of 24-nmi and will alert the pilot when a Controlled Flight Into Terrain (CFIT) is imminent. The Lynx unit will automatically switch to the eTAWs screen when a terrain warning is issued and will also alert the pilot through the audio panel of the terrain situation. The Lynx eTAWs page also shows land based obstacles. Alerts for Negative Climb Rates and other Ground Proximity Warnings (GPWS) are also included with the L3 Lynx Class B eTAWs enablement. The eTAWs feature is embedded directly into the NGT-9000, eliminating the need for additional boxes and costly installations.



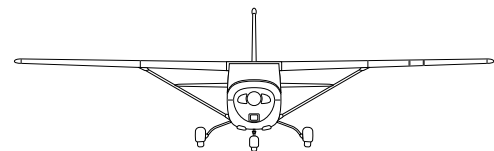
L3's Lynx NGT-9000R Remote model is designed for use with newer integrated glass cockpits or can be configured with the CP-2500 panel mounted control head.



L3 Aviation Products
 5353 52nd Street SE
 Grand Rapids, MI 49512
 Tel: 800.253.9525 (toll-free in the U.S.) / 616.949.6600
 Fax: 616.285.4224

L3Lynx.com

©2017 L3 Aviation Products • Printed in USA



L3 Aviation Products is a leading provider of commercial and military avionics, as well as MRO services. We manufacture a diverse line of safety- and efficiency-enhancing products that sets the standard for next-generation cockpit requirements.

Visit us online at L3AviationProducts.com

This brochure consists of L3 Aviation Products general capabilities information that does not contain controlled technical data as defined within the International Traffic in Arms (ITAR) Part 120.10 or Export Administration Regulations (EAR) Part 734.7-11.

All brand names and product names referenced are trademarks, registered trademarks, or trade names of their respective holders.